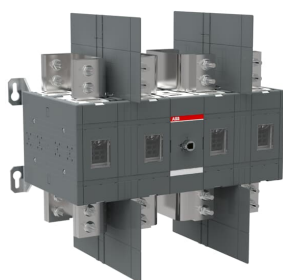


PRODUCT-DETAILS

OT2000U22

OT2000U22 SWITCH-DISCONNECTOR



General Information

Extended Product Type	OT2000U22
Product ID	1SCA117334R1001
EAN	6417019493435
Catalog Description	OT2000U22 SWITCH-DISCONNECTOR
Long Description	4-pole, front operated, base mounted non-fusible disconnect switch, handle and shaft are not included, terminal bolt kit included

Circular Value

Conflict Minerals Reporting Template (CMRT)	9AKK108467A5658
REACH Declaration	1SCC011021D0201
RoHS Information	1SCC011020D0201

Ordering

Minimum Order Quantity	1 piece
Customs Tariff Number	85365080
Country of Origin	Finland (FI)

Popular Downloads

Data Sheet, Technical Information	No documentation needed
Instructions and Manuals	1SCC301094M0203
Mechanical Drawings	OT1600-2000U22.stp

Dimensions

Product Net Width	615 mm
Product Net Height	546 mm
Product Net Depth / Length	415 mm
Product Net Weight	68.9 kg

Technical

Rated Impulse Withstand Voltage (U_{imp})	12 kV
Rated Operational Voltage	Main Circuit 1000 V
Rated Short-time Withstand Current Low Voltage (I_{cw})	for 1 s 50 kA
Power Loss	at Rated Operating Conditions per Pole 96 W
Pollution Degree	3
Handle Type	Handle and shaft not included
Fourth Pole Position	Right Side
Fourth Pole Type	Switched - Simultaneous Function
Switches Operating Mechanism	Mechanism Between the Poles 22 (Between the Poles)
Distance Between Phases	Standard
Position of Line Terminals	Top In - Bottom Out Bottom In - Top Out
Operating Mode	Front operated
Standards	UL 98 / CSA C22.2 NO.4
Special Functions	No
Mounting Type	Base mounting
Number of Poles	4
Degree of Protection	Front IP00
Terminal Type	Lug terminals
Tightening Torque	acc. IEC 60947-1 56 N·m
Mechanical Durability	2500
Lock Type	No

Technical UL/CSA

Maximum Operating Voltage UL/CSA	600 V
Ampere Rating	2000 A
Tightening Torque	acc. IEC 60947-1 56 N·m
Tightening Torque UL/CSA	500 in·lb

Environmental

RoHS Status Following EU Directive 2011/65/EU and Amendment 2015/863 July 22, 2019

Certificates and Declarations

ATEX Certificate	No certification needed
cUL Certificate	cULus certificate OT1600-2000
Declaration of Conformity - CE	No declaration needed
REACH Declaration	1SCC011021D0201
UL Certificate	cULus certificate OT1600-2000
VDE Certificate	No certification needed

Container Information

Package Level 1 Units	box 1 piece
Package Level 1 Width	444 mm
Package Level 1 Depth / Length	714 mm
Package Level 1 Height	385 mm
Package Level 1 Gross Weight	72.1 kg
Package Level 1 EAN	6417019493435

Classifications

Object Classification Code	Q
ETIM 5	EC000216 - Switch disconnecter
ETIM 6	EC000216 - Switch disconnecter
ETIM 7	EC000216 - Switch disconnecter
ETIM 8	EC000216 - Switch disconnecter
ETIM 9	EC000216 - Switch disconnecter (low voltage)
UNSPSC	39122233
IDEA Granular Category Code (IGCC)	5293 >> Switch disconnecter
eClass	V11.1 : 27371403
WEEE Category	4. Large Equipment (Any External Dimension More Than 50 cm)

Categories

Low Voltage Products and Systems → Switches → Switch Disconnectors

